

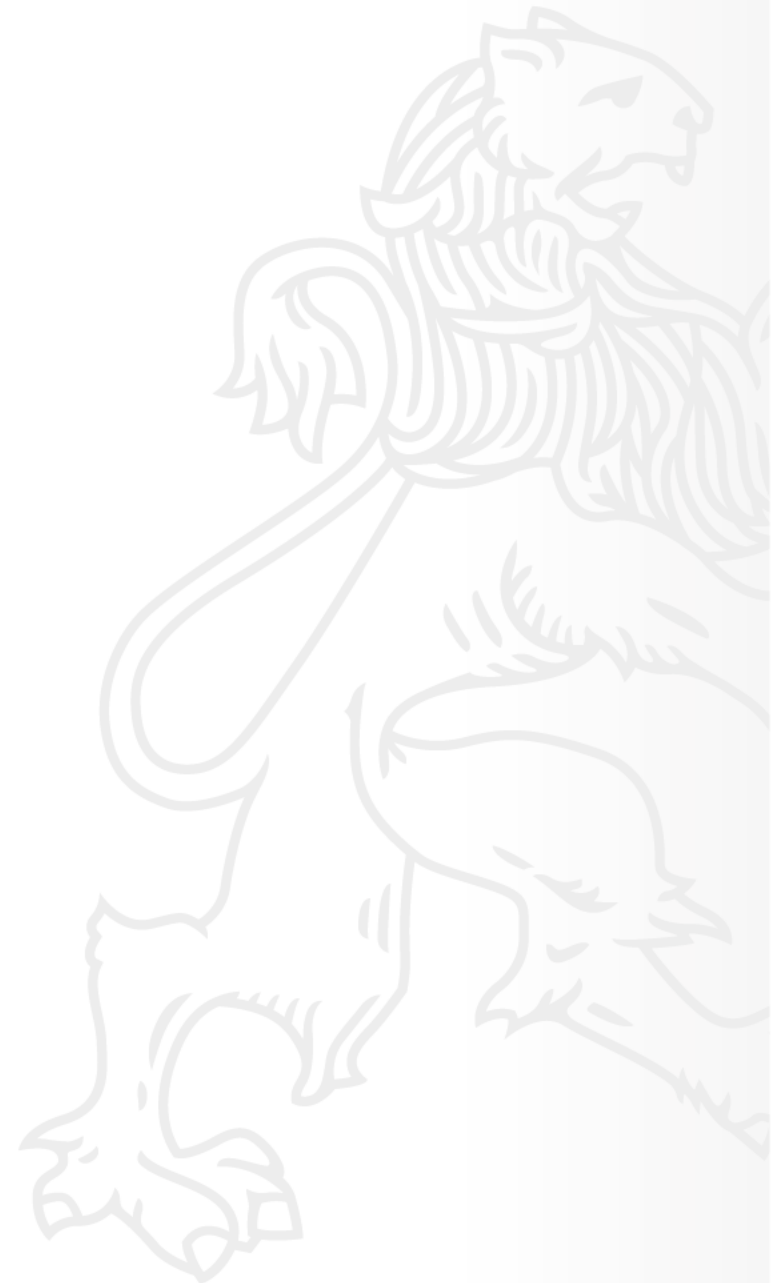


Multiple layers  
**Of The Dissonant Heritage**

Piotr Lorens

Architekt Miasta Gdańska

Politechnika Gdańska – Wydział Architektury

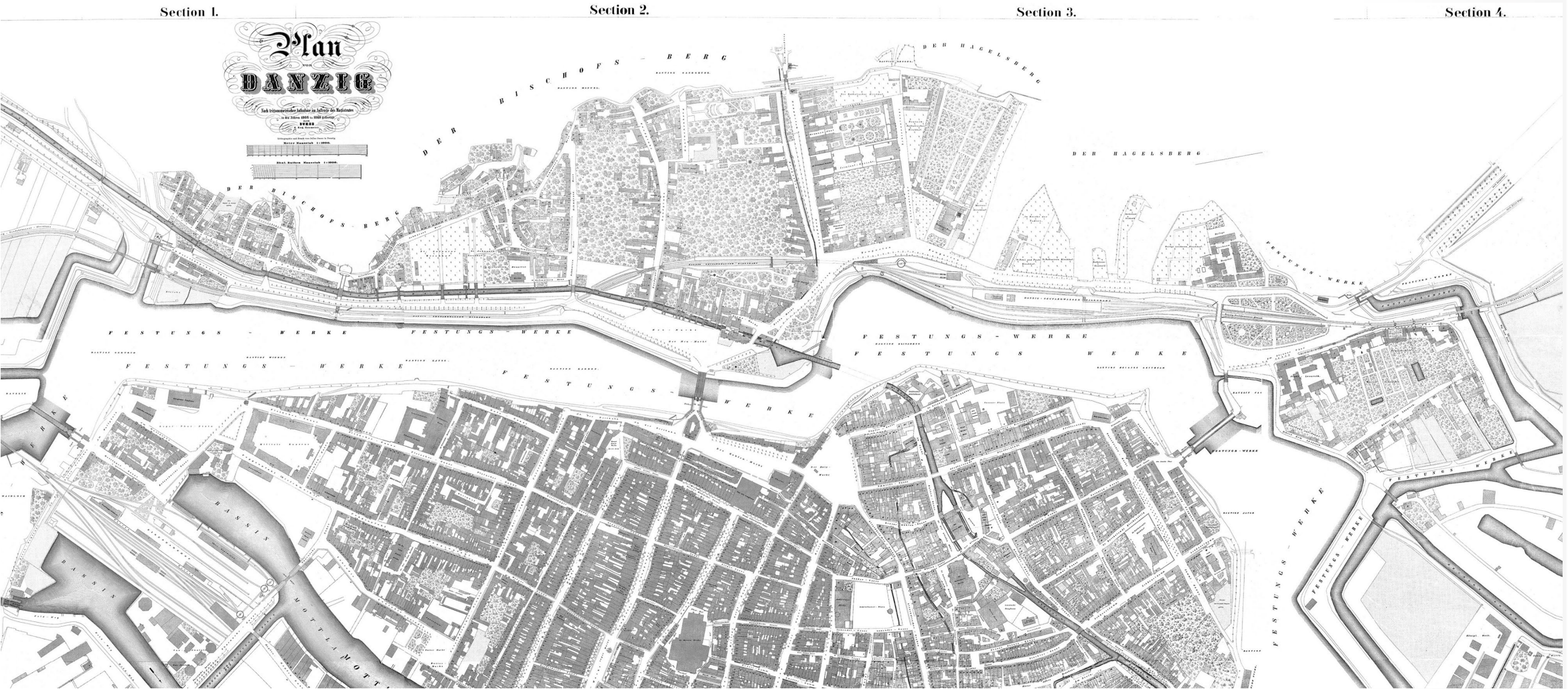


++

NEC TEMERE NEC TIMIDE

++

# Buhse Plan - 1869



++

NEC TEMERE NEC TIMIDE

++



# Buhse Plan - 1869

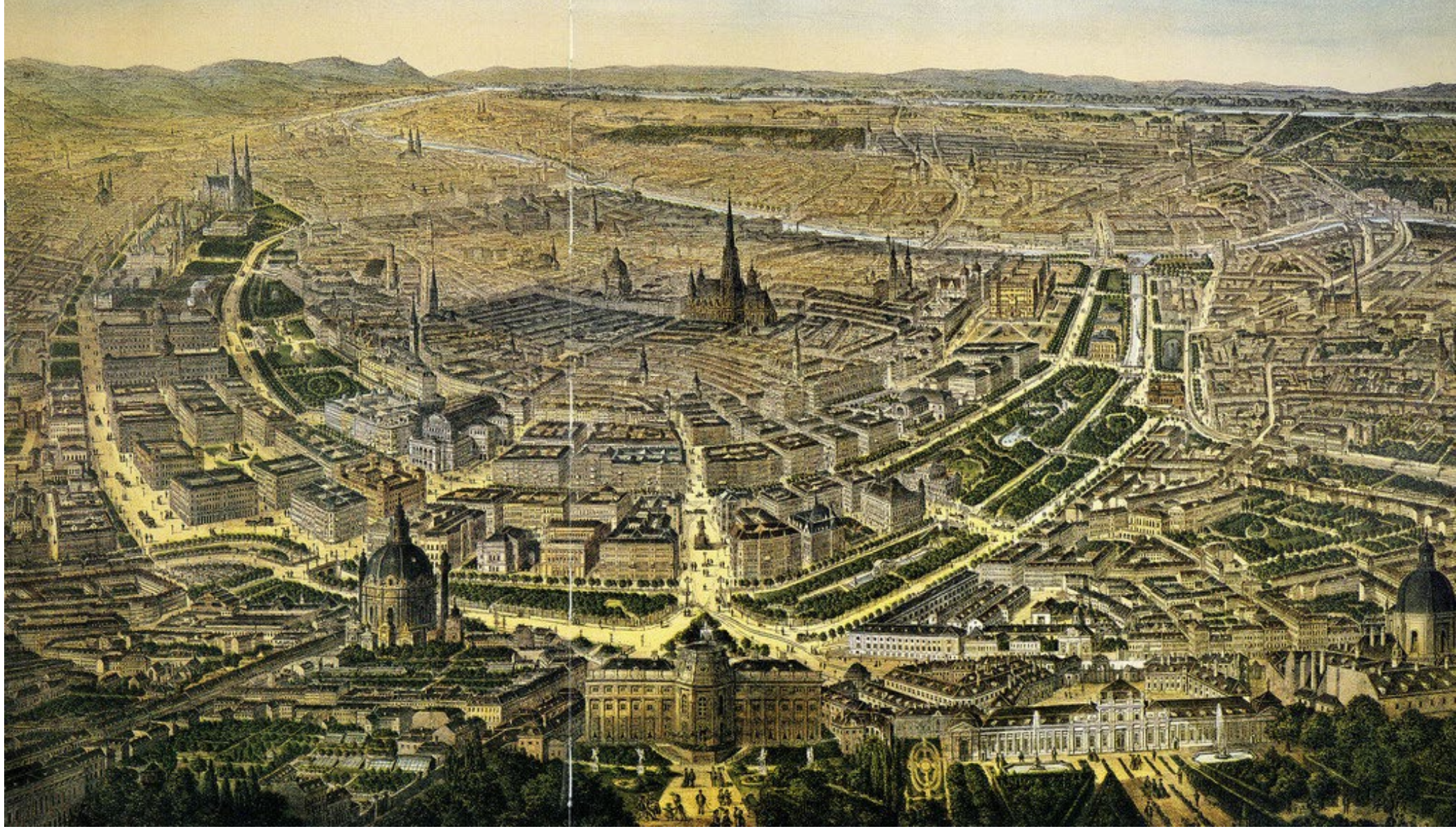


++

NEC TEMERE NEC TIMIDE

++





++

NEC TEMERE NEC TIMIDE

++





++

NEC TEMERE NEC TIMIDE

++



Danzig bis 1896.

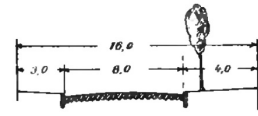
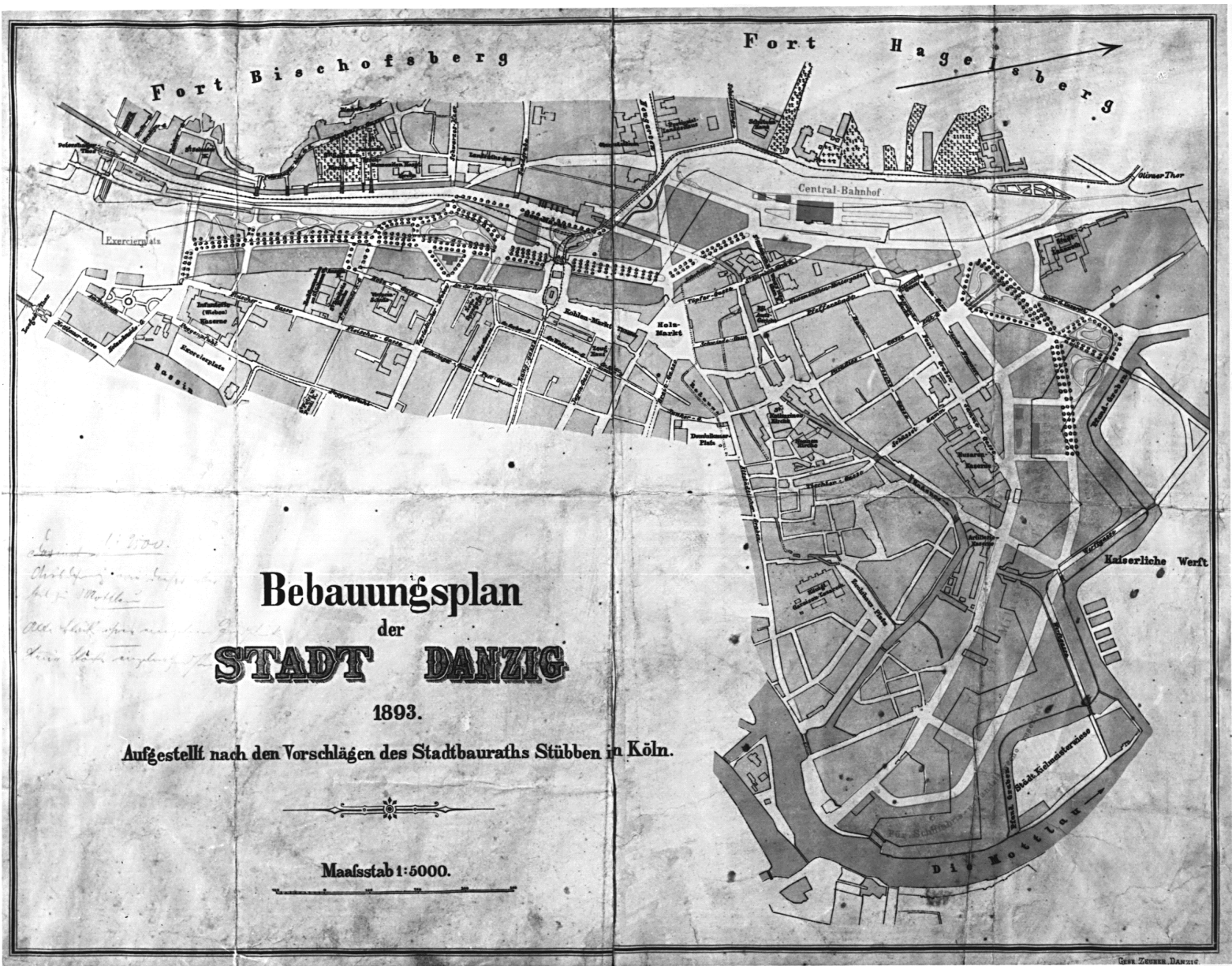


++

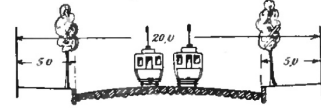
NEC TEMERE NEC TIMIDE

++

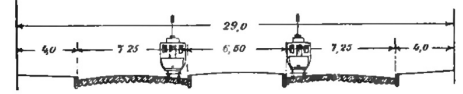




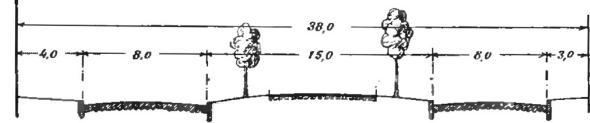
An Hansaplatz  
(einseitig bebaut)



Silberhütte



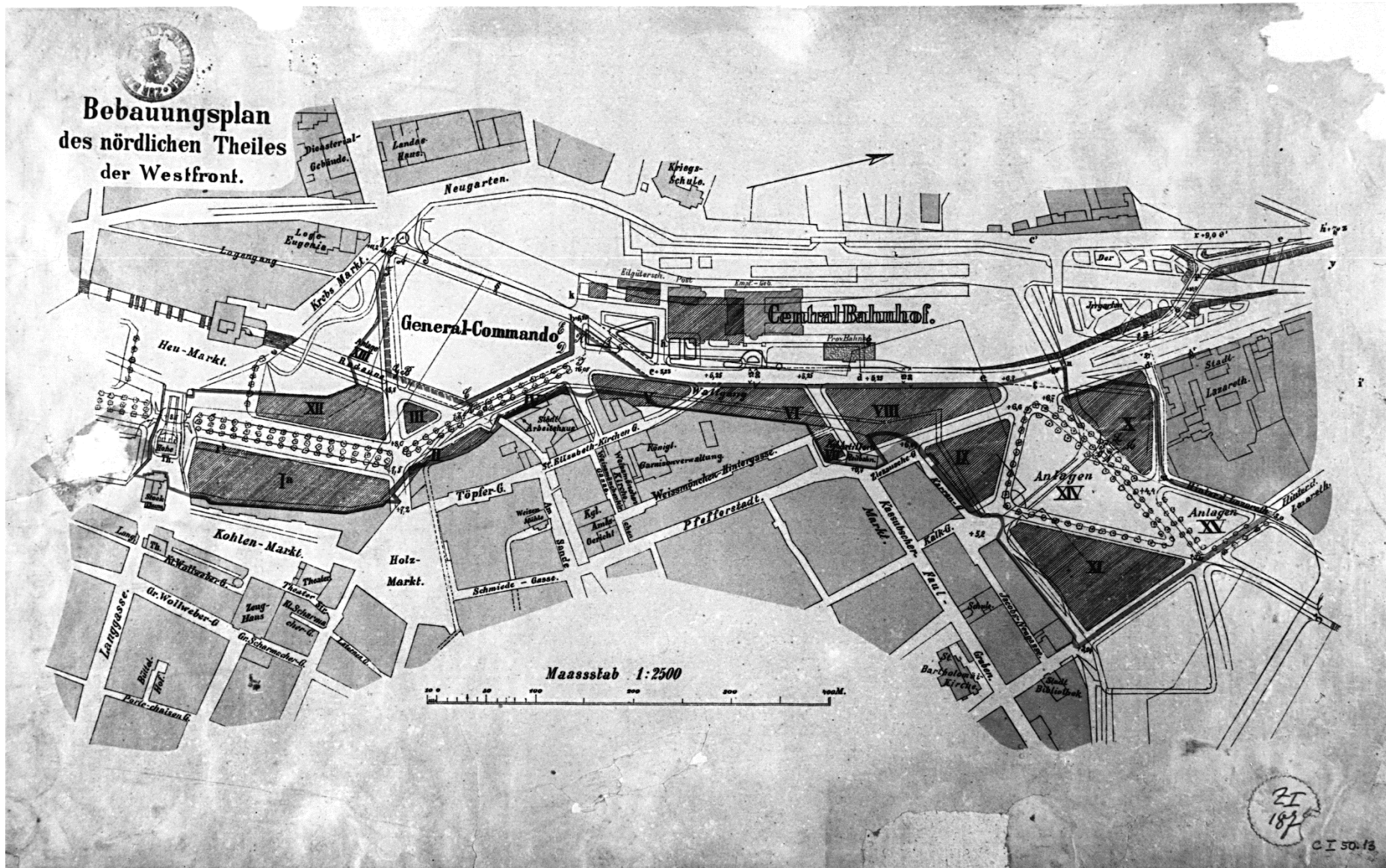
St. Elisabethswall



Domnikswall



# Zachodni Front Śródmieścia – koncepcja według wskazań Stubbena





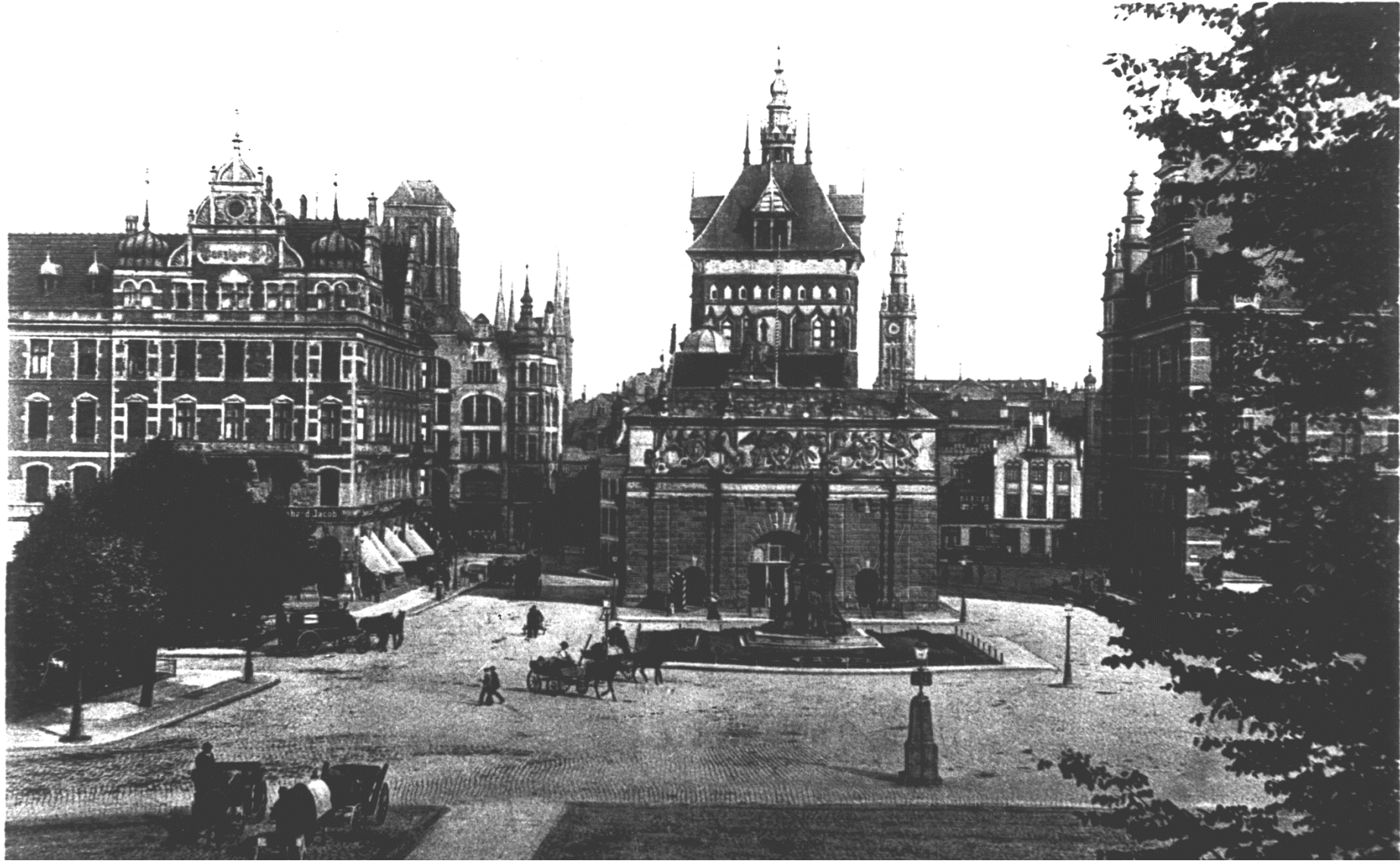


++

NEC TEMERE NEC TIMIDE

++





++ N E C T E M E R E N E C T I M I D E ++

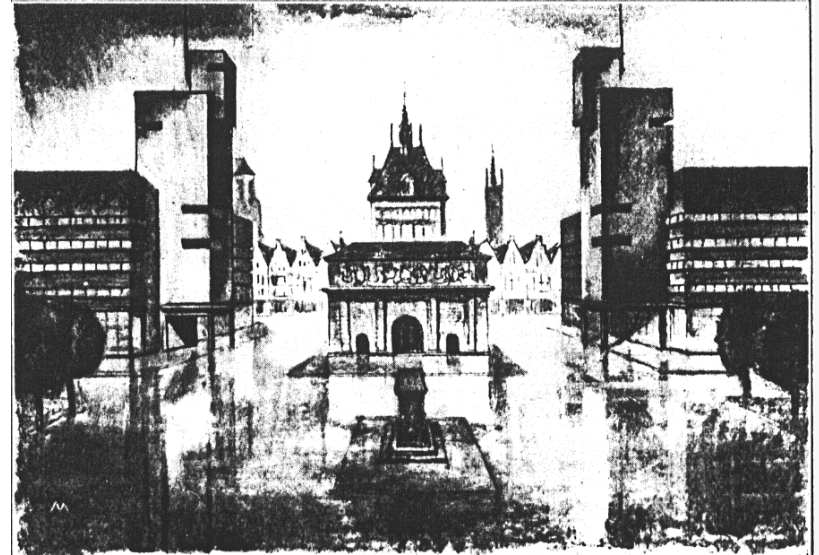
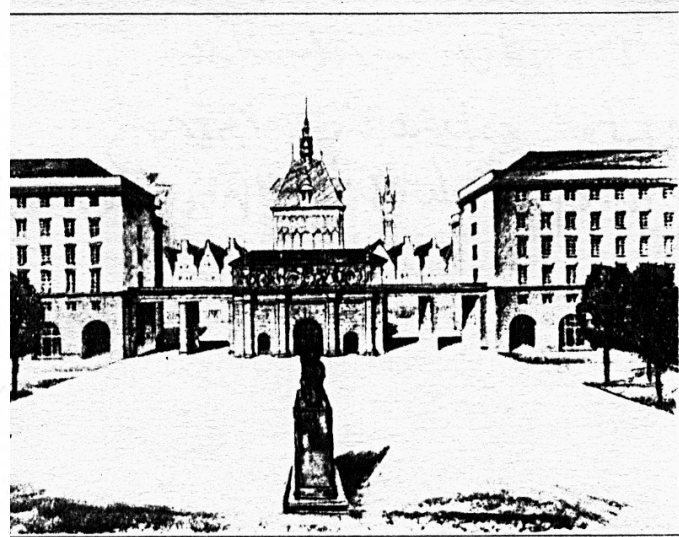
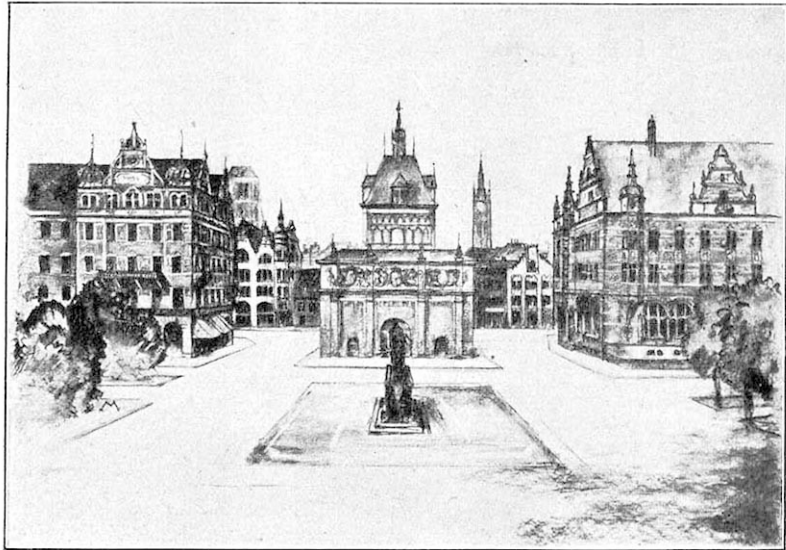


# Gelaendepian – Interwar Period





# Approaches to Architecture













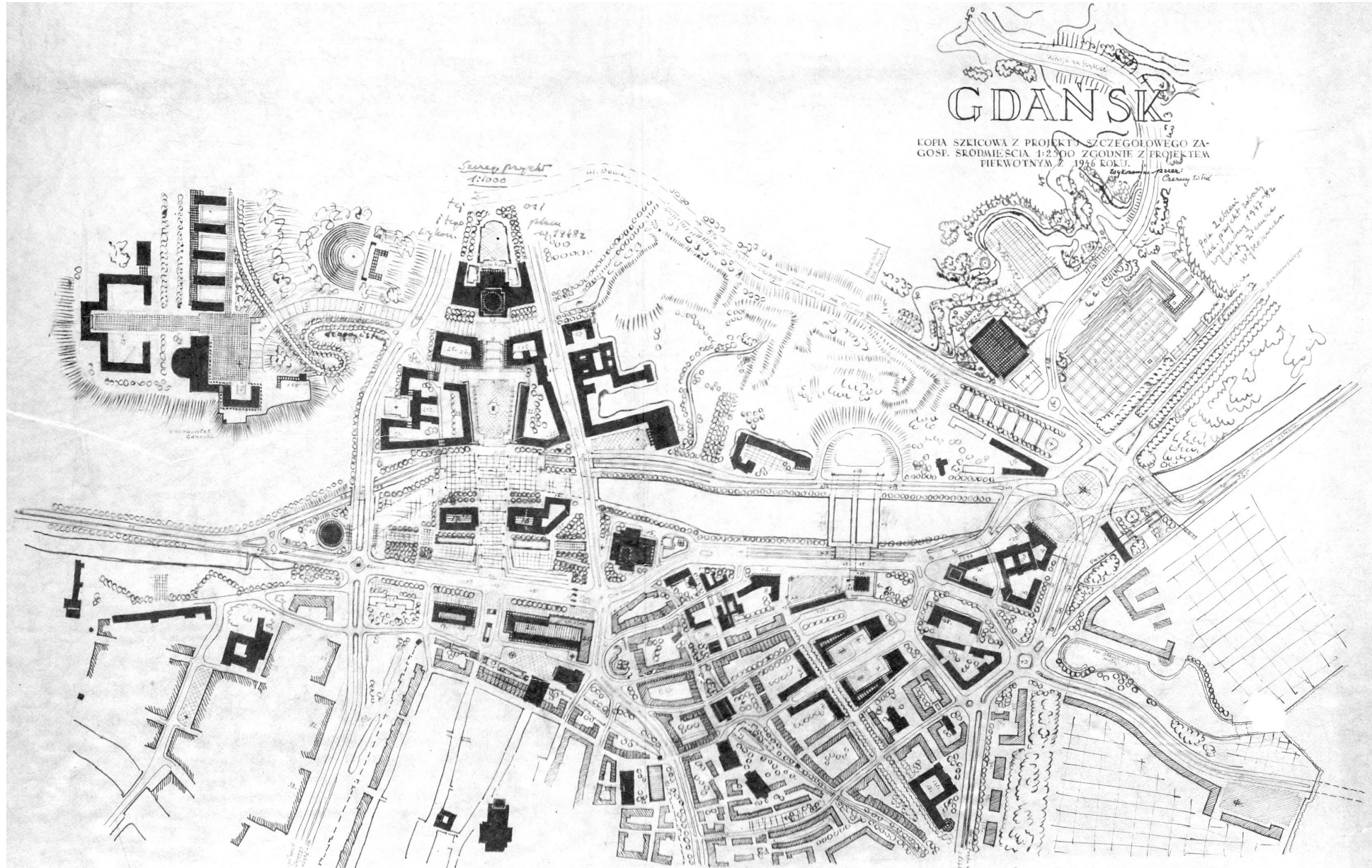


NEC TEMERE NEC TIMIDE

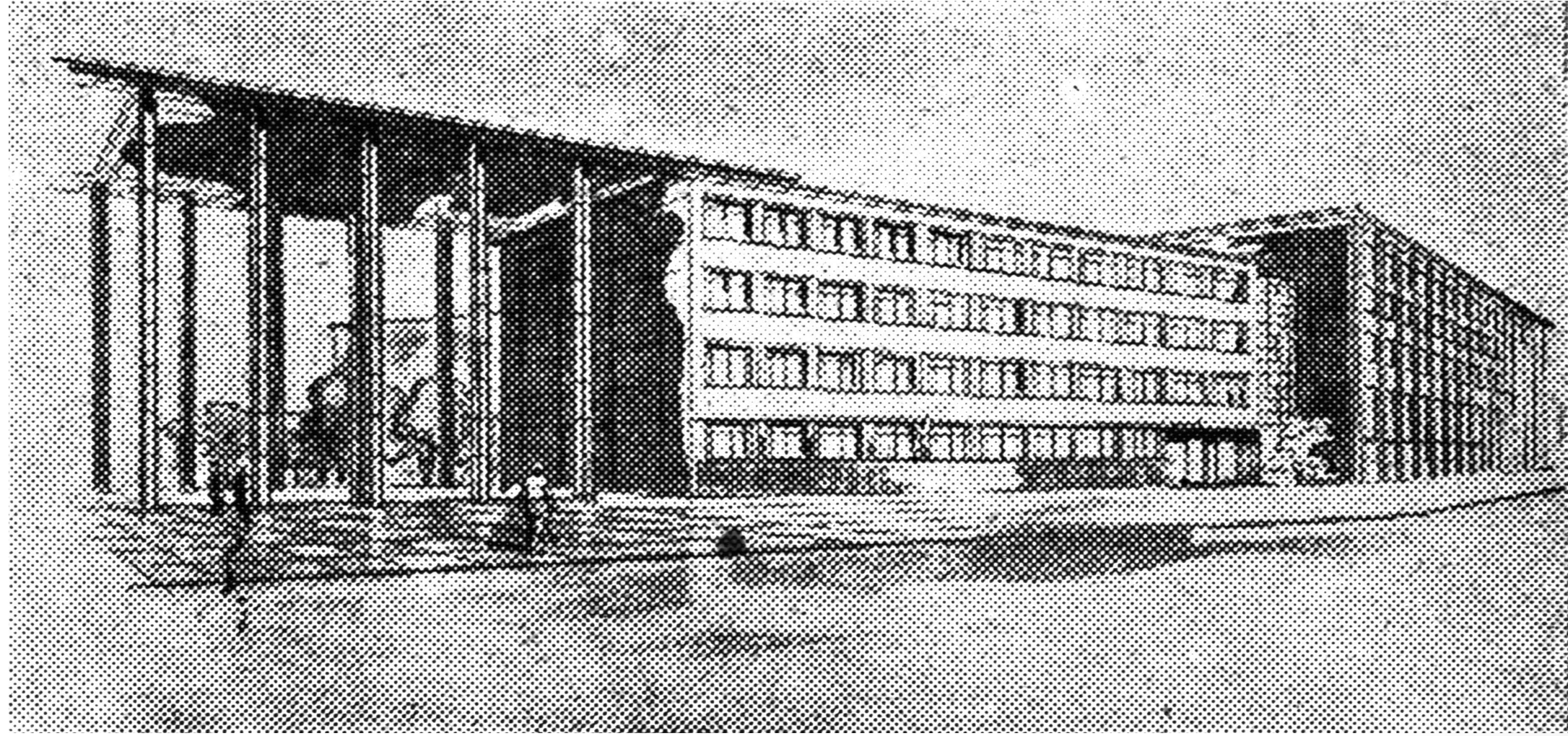
++  
++  
++  
++



# Late modern approach



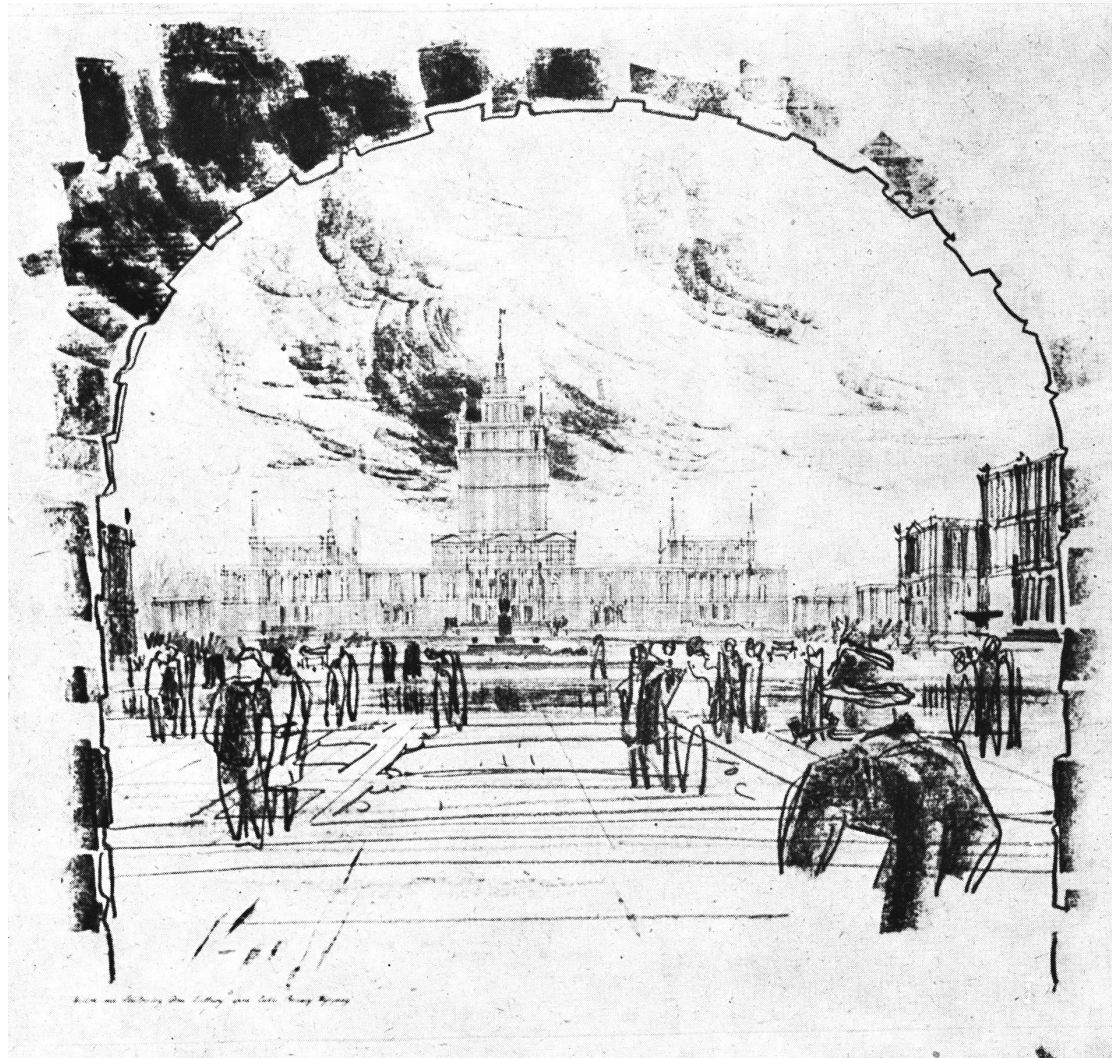
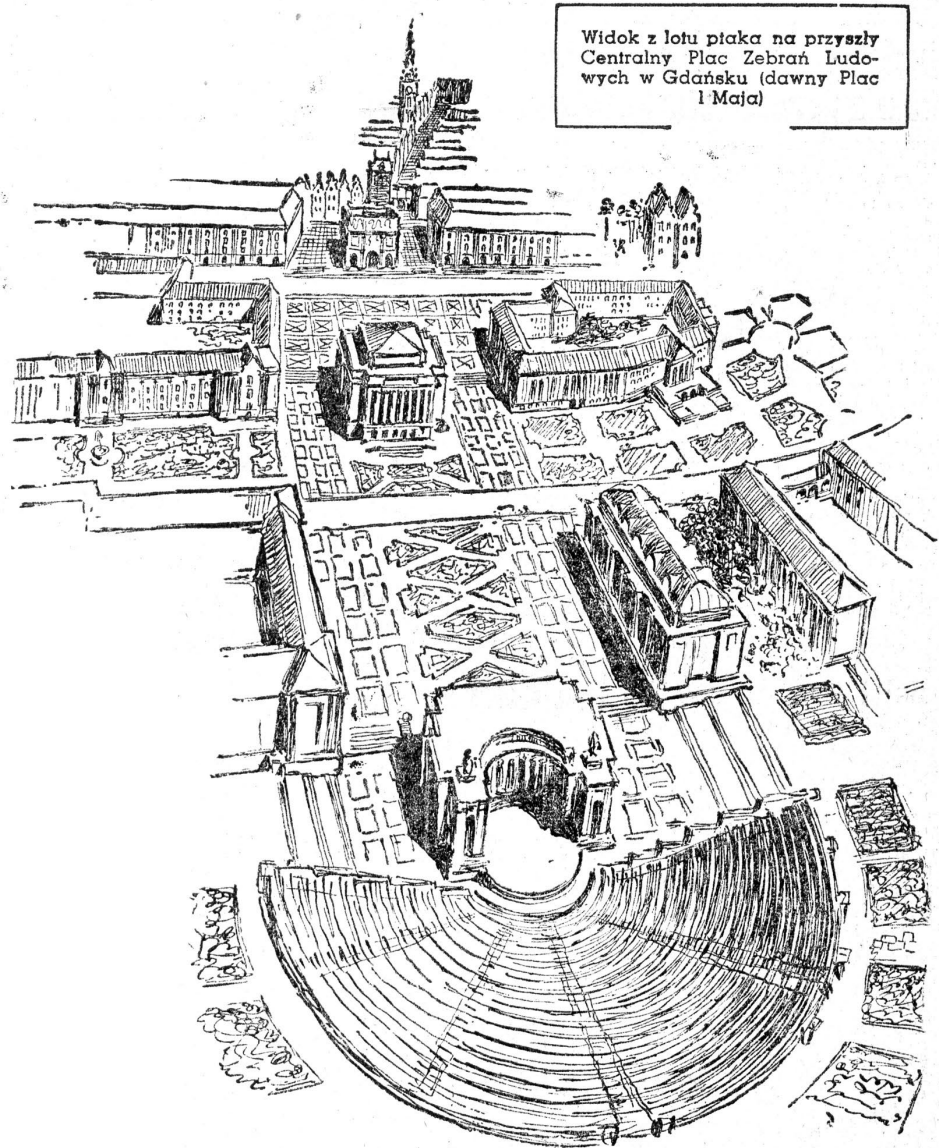




++ N E C T E M E R E N E C T I M I D E ++



# Social Realism





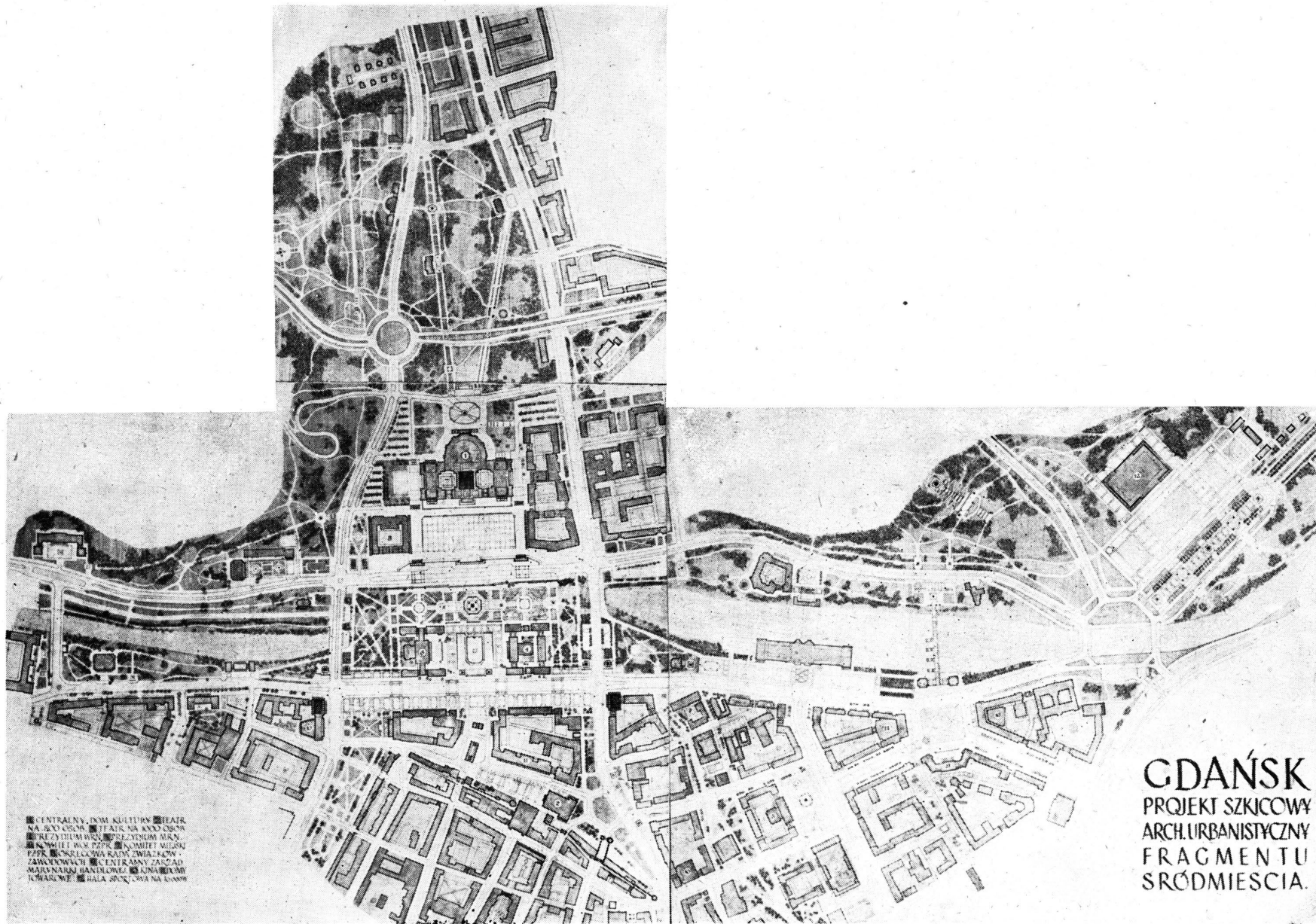


++

NEC TEMERE NEC TIMIDE

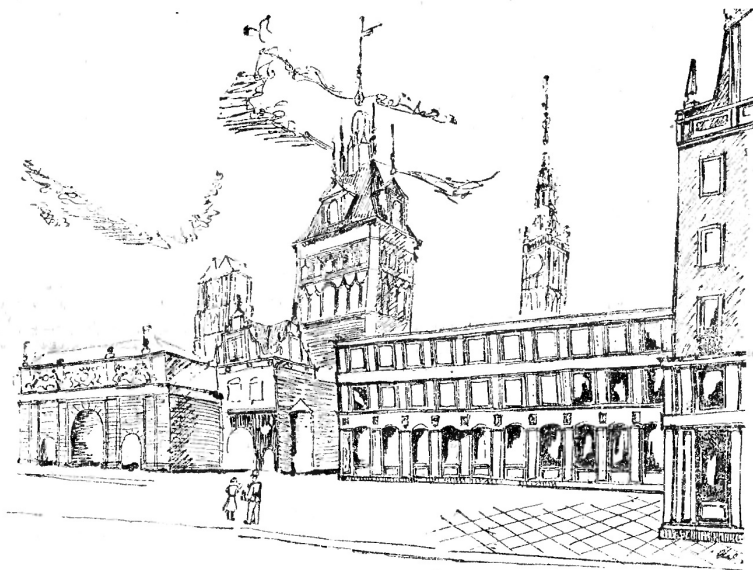
++



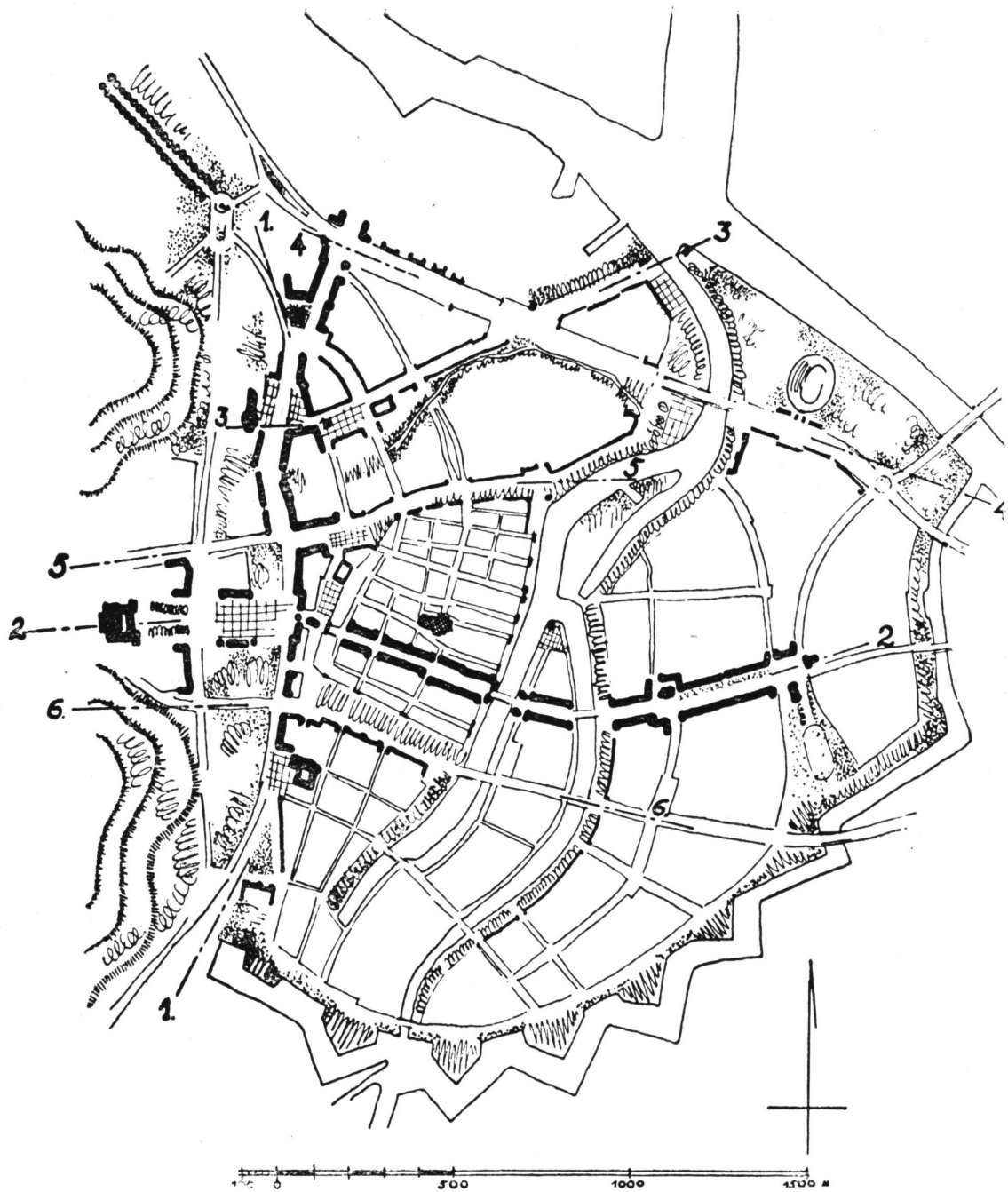
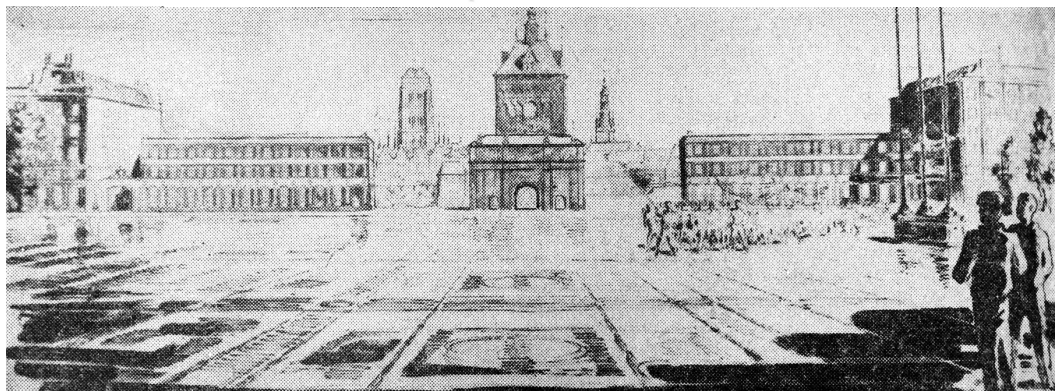


Praca nr 2. Kompozycja urbanistyczna.





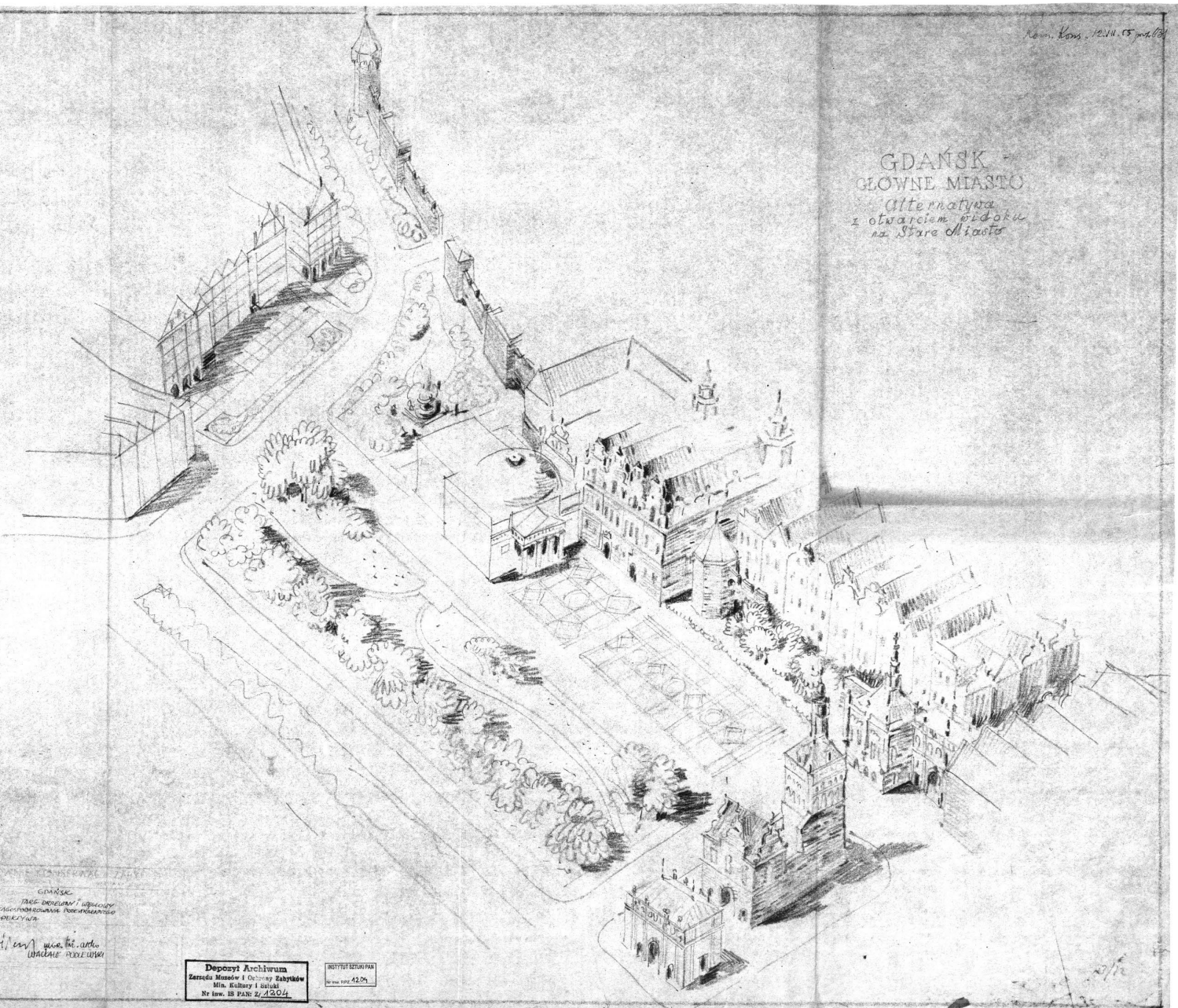
Nowy i Stary Gdańsk. Fragment nowej alei Okopowej.





Archiw. Kras. 12.11.15 nr. 1/21

GDANSK  
GŁÓWNE MIASTO  
*Alternatywa  
i otwarciem podoku  
na Stare Miasto*



GDANSK  
TAKIE DOKUMENTY I WZGLĘDY  
WRAZ ZAGROZAMI I WYKONANIE  
PROJEKTOWYCH  
*Archiw. Kras. 12.11.15 nr. 1/21*

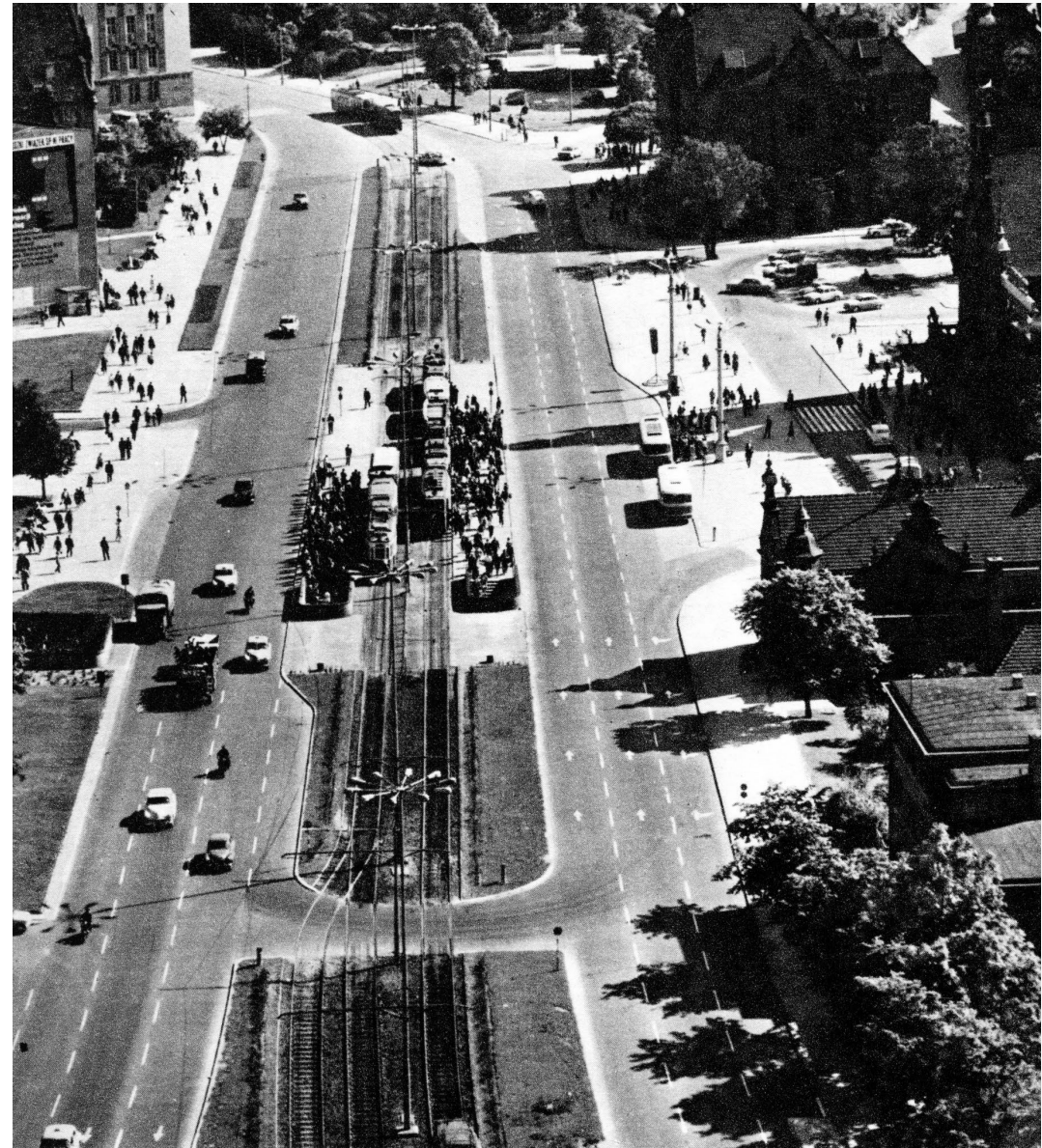
Depozyt Archiwalny  
Zarządca Muzeów i Ochrony Zabytków  
Min. Kultury i Sportu  
Nr Inw. 15 PAM 2/1204

INSTITUT SZKICOWY  
ul. Nowa 42.04  
80-004 GDAŃSK

++  
NEC TEMERE NEC TIMIDE  
++



# 60-ties and 70-ties







OSRODEK ADMIN  
ROGACZEWSKIEGO

++

NEC TEMERE NEC TIMIDE

++

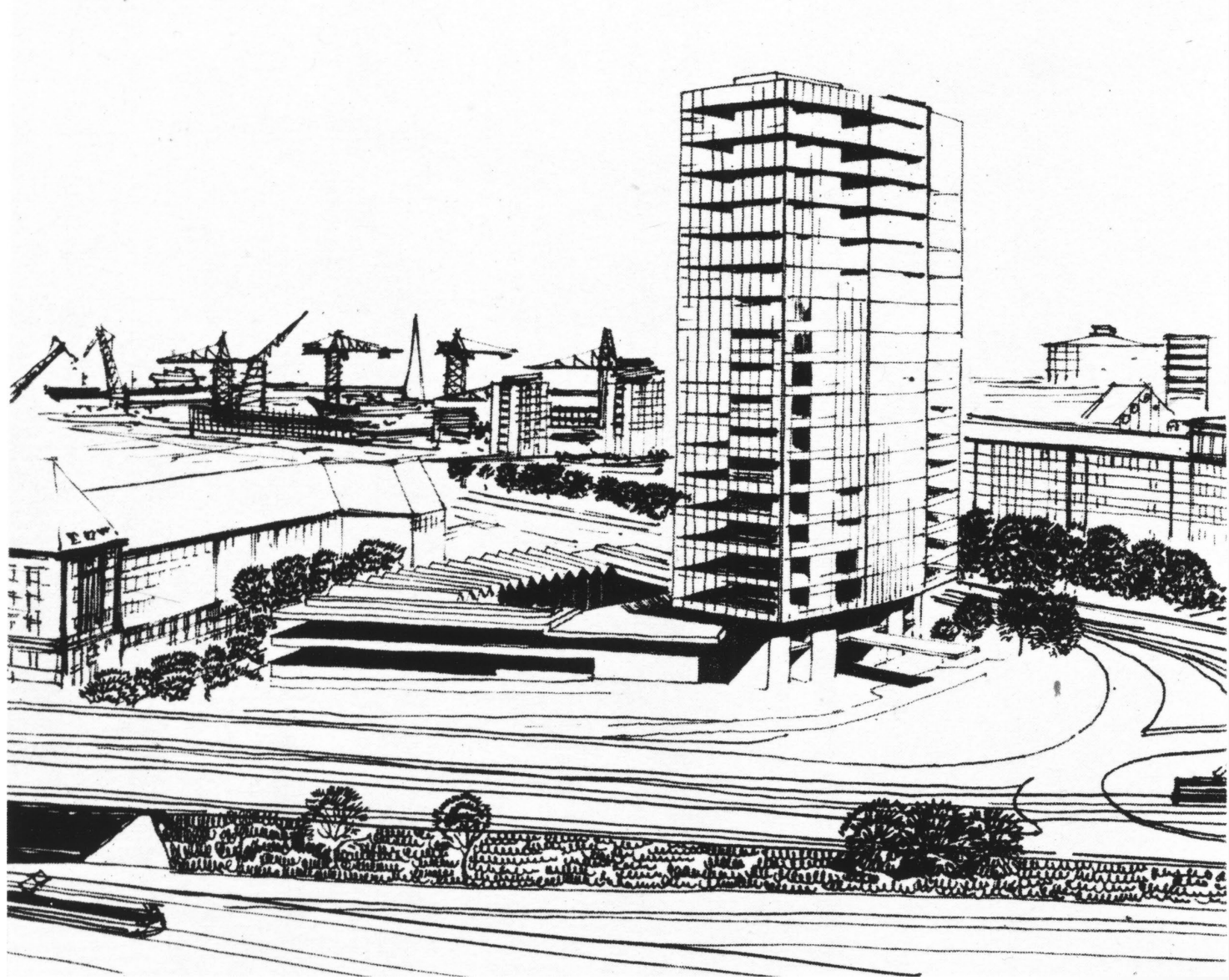




WIDOK Z BISKUPIEJ GORY

++ N E C T E M E R E N E C T I M I D E ++





++

NEC TEMERE NEC TIMIDE

++



# Transformation period



++  
NEC TEMERE NEC TIMIDE  
++



**Thank You for Your Attention!**

**[piotr.lorens@gdansk.gda.pl](mailto:piotr.lorens@gdansk.gda.pl)**



++  
NEC TEMERE NEC TIMIDE  
++