



# Living Spaces

CITIES AND REGIONS SHAPING  
THE BUILT ENVIRONMENT  
FOR EVERYONE

# Peer-learning visit in Gdańsk

23-25 October 2024

# PEER-LEARNING VISIT IN GDAŃSK

## Final agenda

### Wednesday 23 October

Day 1: Jump start: introduction to the Gdańsk context

In the morning	<b>Participants travel / hotel check in</b> <b>Hotel Wolne Miasto</b> <b><u>Świętego Ducha 2. 80-834 Gdańsk</u></b>	<b>11.00 – Organizational meeting</b> Preparations
13:00	<b>Registration and welcome lunch</b> Meeting point: <u>Długi Targ 39/40</u> – room 209	
14:00	<b>Session I – Welcome session</b> <ul style="list-style-type: none"> <li>– Welcome by the Deputy Mayor of Gdańsk, Piotr Grzelak</li> <li>– Welcome by the Gdansk City Architect</li> <li>– Living Spaces in the EU policy context: Jutta Kastner, Policy Officer, European Commission Directorate-General for Education, Youth, Sport and Culture</li> <li>– Welcome by Living Spaces team</li> <li>– Welcome by Gdansk local team</li> </ul>	Welcome by: Deputy Mayor for Sustainable Development - Piotr Grzelak Gdańsk team - Piotr Lorens, Mariusz Czepczyński, Maciej Buczkowski (10') European Commission - Jutta Kastner (10') Living Spaces team - Ermioni Chatzimichail, Iwona Łopacińska and Iris Gleichmann (10') Introduction of the local team – Piotr Lorens (5')
14:40	<b>Setting the scene of the peer-learning visit</b> <ul style="list-style-type: none"> <li>– <b>Characteristics and specifics of Gdańsk</b> Piotr Lorens (Gdańsk City Architect)</li> <li>– <b>The Gdańsk Shipyard and its unique heritage</b> Magdalena Staręga (Main Specialist responsible for the cultural heritage at the European Solidarity Center – ECS)</li> <li>– Q&amp;A with participants</li> </ul>	Piotr Lorens (20') Magdalena Staręga (20') (5') Q&A
15:25	<b>Session II – Getting to know each other</b> Ice-breaker with participants	Facilitated by <b>Living Spaces</b> (60')
16:25	Coffee Break	
16:55	<b>Session III – Focus on the local context</b> <ul style="list-style-type: none"> <li>– Outline of Gdańsk Project Workshops Piotr Lorens (Gdańsk City Architect)</li> </ul>	Piotr Lorens (20') (5') Q&A
17:20	<b>Session IV – Informal approaches to urban planning – experiences in spurring public participation and co-creation of spaces</b> <ul style="list-style-type: none"> <li>– <b>Gdańsk City Center Re-activation, Przedmiejskie Avenue</b></li> </ul>	First presentations (20') (5') Q&A Second presentation (20') (5') Q&A Third presentation (10') (5') Q&A



	<p>Karol Spieglanin (chairman), arch. Paweł Mrozek (Vice-chairman – Gdańsk Agglomeration Development Forum - FRAG)</p> <ul style="list-style-type: none"> <li>– <b>Quo Vadis Gdańsku &amp; Masterplanning the Gdańsk districts</b> Przemysław Kluz (manager of the Neighborhood House at the Gdańsk Social Innovation Foundation – GFIS)</li> <li>– <b>Involving the citizens in the participatory budget</b> Barbara Tusk (Vice Director for Public Spaces, Gdańsk Roads and Greenery Administration - ZDiZ)</li> <li>– <b>Group discussion</b> – presentation of participants’ experiences, opinions, recommendations</li> </ul>	Group discussion (25’)
19:00	<p>Informal walk (optional) Podwale Przedmiejskie, Dolne Miasto</p>	Walk to the restaurant, led by Piotr Lorens and Wojciech Chmielewski (Gdańsk City Architect Office – BAM)
20:00	<p><b>Social dinner</b> at <u>Łąka Bar (Dolne Miasto), Łąkowa 35/38, 80-769 Gdańsk</u></p>	

## Thursday 24 October

### Day 2: Deep dive into

08:30	<p><b>Meet at the hotel reception</b> <b>Hotel Wolne Miasto</b> <u>Świętego Ducha 2, 80-834 Gdańsk</u> Walk to the venue &amp; morning coffee: <u>Długi Targ 39/40</u> – room 209</p>	(7’)
09:00	<p><b>Introduction to day 2 and setting the scene</b> Piotr Lorens (Gdańsk City Architect)</p>	(5’)
09:05	<p><b>Session V – Transforming public spaces</b></p> <ul style="list-style-type: none"> <li>– <b>Gdańsk Local Spaces</b> Anna Fikus-Wójcik (Head, Public Spaces and Landscape Team, Gdańsk Development Agency – BRG)</li> <li>– <b>Long Gardens – extending the „Royal Route”</b> Piotr Czyż (Head of the “City Initiative” society - IM), Martyna Nagórska (Main Specialist responsible for the participatory processes, Gdańsk City Architect Office – BAM)</li> <li>– <b>Low Town – art in public space</b> Anna Szyrwelska (Head of the Art in Public Space team, Contemporary Art Center Łażnia)</li> </ul>	<p>First presentation (15’) Q&amp;A (5’) Second presentation (10’) Q&amp;A (5’) Third presentation (10’) tbc Q&amp;A (5’) Group discussion (30’)</p>



	<ul style="list-style-type: none"> <li>– <b>Group discussion</b> – presentation of participants' experiences, opinions, recommendations</li> </ul>	
10:25	<b>Site visit to the Granary Island project</b>	Introduction Piotr Lorens (5') before the walk
10:45	Bus transfer to Young City/Gdańsk Shipyard area	Bus (15')
11:00	<b>Site visit to Montownia and LayUp Gallery</b>	Guided walk from Montownia via Imperial Shipyard and 100cznia
12:00	<b>Session VI – Transforming urban areas</b> <ul style="list-style-type: none"> <li>– <b>Welcome to NOMUS (New Art Museum)</b> Maja Murawska (Adjunct, New Museum of Art – NOMUS)</li> <li>– <b>Overview of the Young City transformation project</b> Piotr Lorens (Gdańsk City Architect)</li> <li>– <b>Young City – future of the district &amp; Nowa Wałowa – future of the street</b> Piotr Czyż (Head of the “City Initiative” society - IM)</li> </ul>	Welcome (5') Overview by Piotr (10') Q&A (5') Young City presentation (20') Q&A (5')
12:45	Lunch at NOMUS <a href="#">Stefana Jaracza 14, 80-863 Gdańsk</a>	Lunch at the museum cafeteria
13:45	<b>Continuation of Session VI</b> <ul style="list-style-type: none"> <li>– <b>Grunwaldzka Avenue Belt Study</b> Piotr Czyż (Head of the “City Initiative” society - IM)</li> <li>– <b>Transforming the dissonant heritage – Grunwaldzka Housing District</b> Iga Perzyna (City Initiative – IM), Grzegorz Sobczyk (Gdańsk City Architect Office)</li> <li>– <b>Group discussion</b> – presentation of participants' experiences, opinions, recommendations</li> </ul>	First presentation (10') Q&A (5') Second presentation (10') Q&A (5') Group discussion (20')
14:45	Bus transfer to Olivia Center and visits to <b>Grunwaldzka Housing District (GDM) &amp; the so called Islet (“Wysepka”) area</b>	bus transfer to Olivia Center (60') <b>ON THE WAY</b> – visit to Grunwaldzka Housing District & <a href="#">The Islet – Al. Grunwaldzka 127</a>
15:30	<b>Session VII – The Islet workshop at Olivia Center</b> <b>Collaborative workshop using the ‘GWP’ methodology</b> curated by Piotr Czyż & City Initiative (IM) team <b>Topics:</b> <ul style="list-style-type: none"> <li>– strategic vision</li> <li>– urban development vision</li> <li>– public spaces vision</li> </ul> presentation and discussion	(coffee and snacks provided by the host on site)  Introduction to the workshop – the context – Wojciech Chmielewski (10')  Rethinking The Islet case – workshop involving the peer visit participants (1h30')



		Each group appoints a rapporteur, and at the end each one shares in plenary (20')
17:30	Transfer back to the old town by bus	
18:00	Free time	
20:00	<b>Social dinner</b> at Motława - <a href="#">Stara Stocznia 2/1, 80-858 Gdańsk</a>	Right where the Radunia and Motława canals connect, between the shipyard and the old town.

## Friday 25 October

Day 3: Take home – Knowledge exchange and replication

08:30	<b>Meet at the hotel reception</b> <b>Hotel Wolne Miasto</b> <a href="#">Świętego Ducha 2, 80-834 Gdańsk</a> Walk to the venue: <a href="#">Kunst Wodny – City Culture Institute (Instytut Kultury Mieskiej), Targ Rakowy 11 – Model Room</a>	(7' walk)
09:00	<b>Overview of the day</b> Piotr Lorens (BAM)	(5')
09:05	<b>Session VIII – Introduction to the Kunst Wodny and IKM</b> – <b>Introduction to City Culture Institute (IKM)</b> <b>Overview of the projects curated by IKM</b> – Natalia Cyrzan (Head of the Program Department, Urban Culture Institute - IKM) – <b>Exploring the city center model</b> – Jarosław Zulewski (Gdańsk City Architect Office – BAM, Karina Rojek - IKM)	First presentation (20') Second presentation (20')
09:45	<b>Session VIII – Replication workshop</b> facilitated by Living Spaces team Participants reflect on which of the projects, approaches, and methods they learnt about during the peer-learning visit they would like to implement in their city/region.	(90')
11:15	Coffee break	
11:45	<b>Session IX – Feedback session</b> facilitated by Living Spaces team Participants reflect on their lessons learnt/what was most inspiring and what they will do with this knowledge when they go home	
12:45	<b>Conclusions</b> Gdańsk team, European Commission and Living Spaces team	
13:00	<b>Networking lunch</b> @IKM Departure of participants	



	Bag drop will be available onsite	
14:00	<b>Optional program</b> - visit to the exhibition on rebuilding Gdańsk after World War II and the creation of the Grunwald Housing District at the gothic <b>House of Tortures (Katownia)</b> <a href="#">Targ Weglowy 26</a> .	Visit to the exhibition guided by the curator – dr Klaudiusz Grabowski of the Gdańsk Museum

## Practical information

### Accommodation

**The hotel:** Hotel Wolne Miasto, [Gdańsk, ul. Św. Ducha 2](#)

Check-in from 14:00 PM.

Check-out by 12:00 PM.

**Check-in** from 2:00 PM. *You can store your luggage at the hotel reception if you arrive earlier.*

**Check-out** by 12:00 PM. *On the last day please remember to check out after breakfast and you can store your luggage at the hotel reception or take it with you – there will be a locker room provided by the IKM staff by the reception desk as well as a self-service cloak room on the ground floor.*

### Getting to the accommodation:

#### From the airport:

Train: The most convenient way to reach the center is by train. The train platform is located just outside the terminal building and painted lines on the floor and signposts mark access.

Take the platform for direction "Gdańsk". This platform is the closest to the terminal building, and the trains should be moving to your right (east, in geographic terms). Your final destination should be *Gdańsk Główny* (Central Station – picture below).







**Important:** Pay attention to the train's destination, as there are different routes. Ensure you either arrive directly at *Gdańsk Główny (Central Station)* or plan for a transfer at *Gdańsk Wrzeszcz*, depending on the train. The transfer usually requires changing platforms: from 1 or 2 (regional) for platform 3 (urban).

- **Trains to *Gdańsk Główny* or *Tczew*:** These trains head directly to *Gdańsk Główny* (the central station).
- **Trains to *Gdańsk Wrzeszcz* or *Gdynia Główna (via Gdańsk Wrzeszcz)*:** These trains do **not** stop at *Gdańsk Główny (Central Station)*. Instead, you will need to transfer at *Gdańsk Wrzeszcz* station. From there, you can take any regional or city train (SKM) heading south to *Gdańsk Główny (Central Station)*.

Cost: Tickets cost 5,50 zł (around 1.20 Euro). There are ticket machines on platforms.

**Bus:** Line 210 (direction 'Dworzec Główny') takes you directly to the city centre. The Bus stop is located outside the terminal and are clearly marked "Port Lotniczy 01". For reaching the hotel get off at stop "Hucisko 03" duration approximately 30 minutes. The hotel is 5 minutes' walk.

Buses can be a good alternative, especially at night when trains are less frequent or not running at all.

**Taxi or Uber:** A taxi or Uber ride takes about 20-30 minutes, depending on traffic. The cost is typically around 20 Euro one way, Uber is usually cheaper.

**Important:** It's best to avoid buses or taxis during rush hour, as traffic can cause significant delays.

### **From the central station *Gdańsk Główny*:**

**Hotel Wolne Miasto** ([Świętego Ducha 2](#)) - About 10 minutes' walk. From the Central Station, exit towards *Podwale Grodzkie* street, turn left, and walk towards *Targ Drzewny* square (with an equestrian statue). After crossing the square (roundabout) you'll find Hotel Wolne Miasto next to the sandstone-clad theatre edifice.



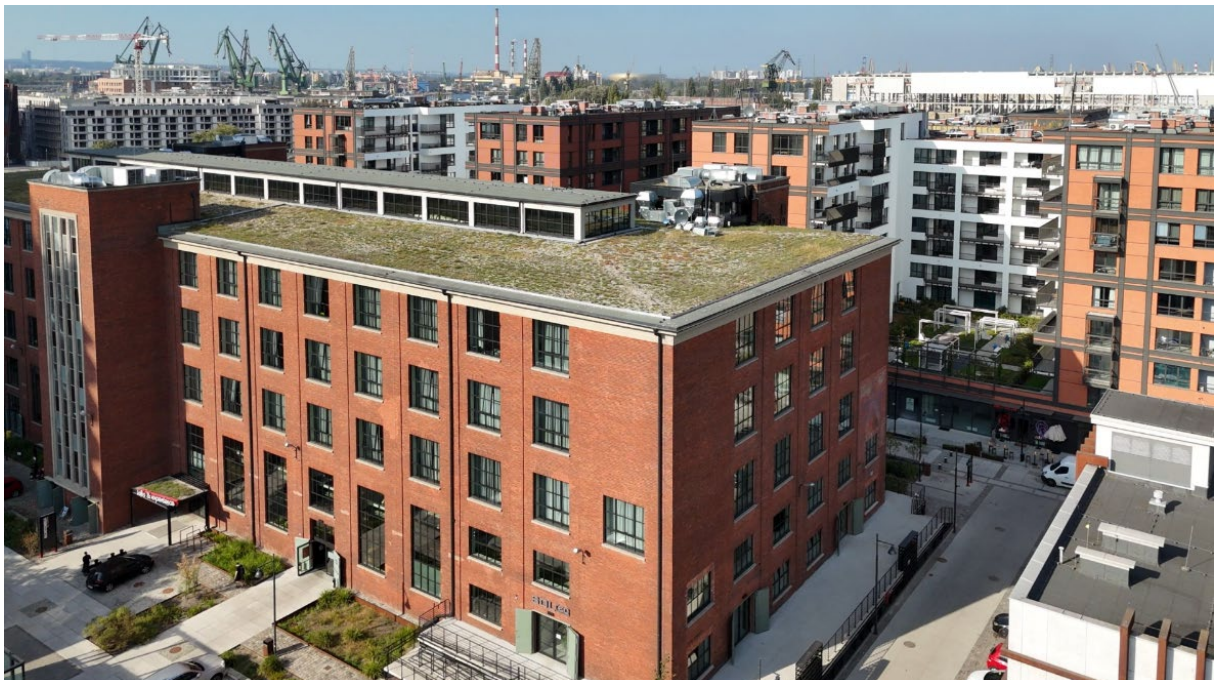
**The main venue** is Długi Targ (Long Market) no. 39/40. About 15 minutes' walk. From *Gdańsk Główny* station, exit towards *Podwale Grodzkie*, turn left, and head towards *Targ Węglowy*. Walk straight through *Długa* street into the old town until you reach *Długi Targ 39/40*.

The shipyard grounds, Wrzeszcz (GDM) and Oliwa districts will be reached by our exclusive bus.

Note that there are roadworks underway in front of the Central Station, in the Long Market (Długi Targ) and at the waterfront, just next to the gothic Crane – this might result in need of taking a different route than web maps would suggest.



Nowa Wałowa (Popiełuszki street) and the Imperial Shipyard



Montownia and the new development Doki on the former shipyard grounds





Recently rebuilt northern tip of the Granary Island



GDM – Grunwald Residential District

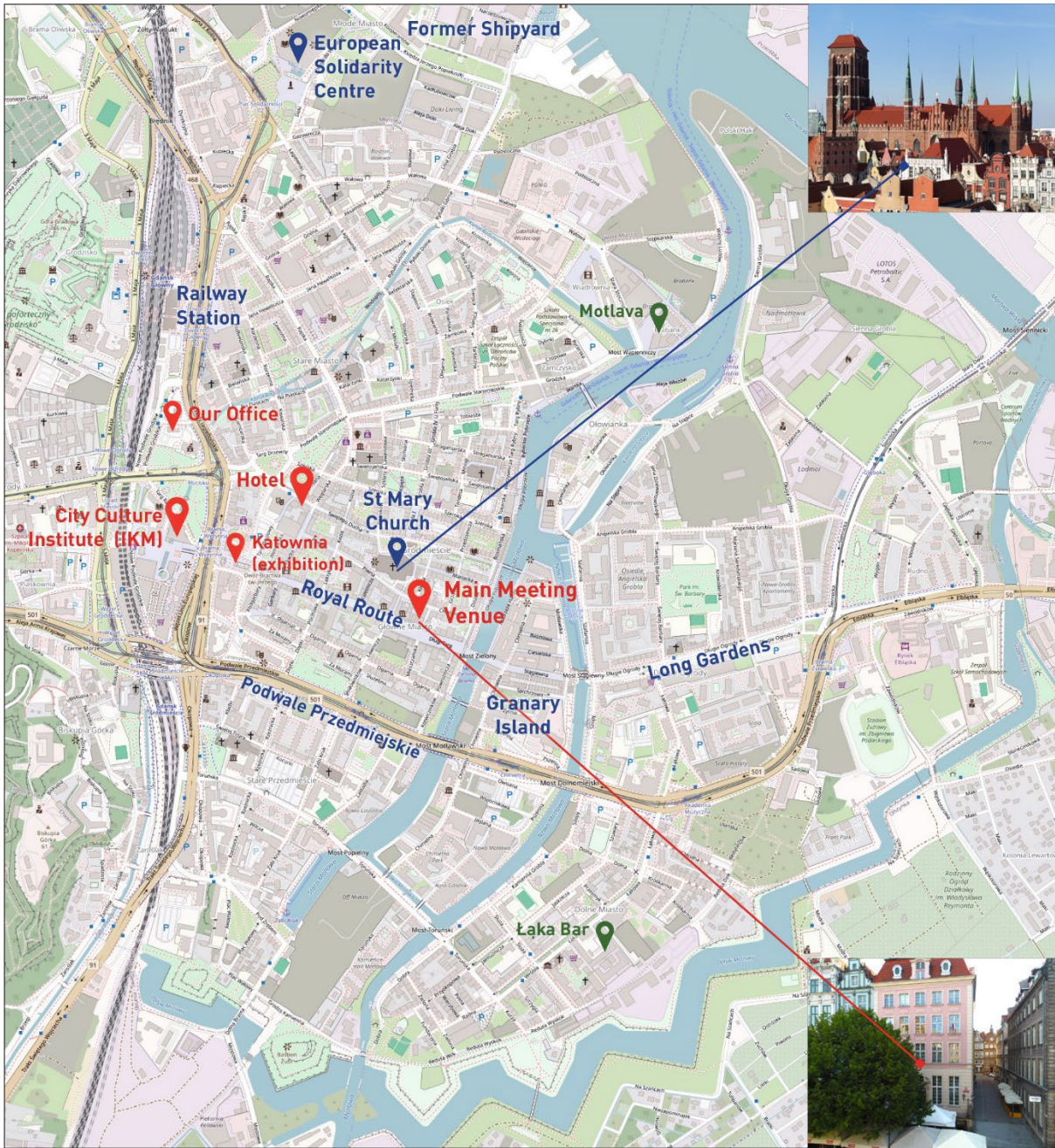


Funded by  
the European Union

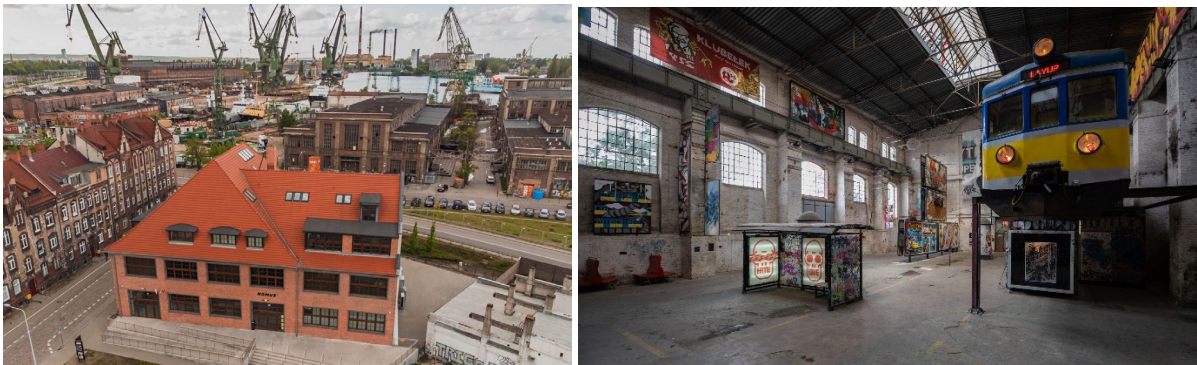


ace-cae.eu





Map of the historic centre with some key locations indicated. The Main Venue. ↑



The Former Shipyard Grounds. Left: NOMUS Gallery. Right: LayUp Gallery ↑



Funded by  
the European Union

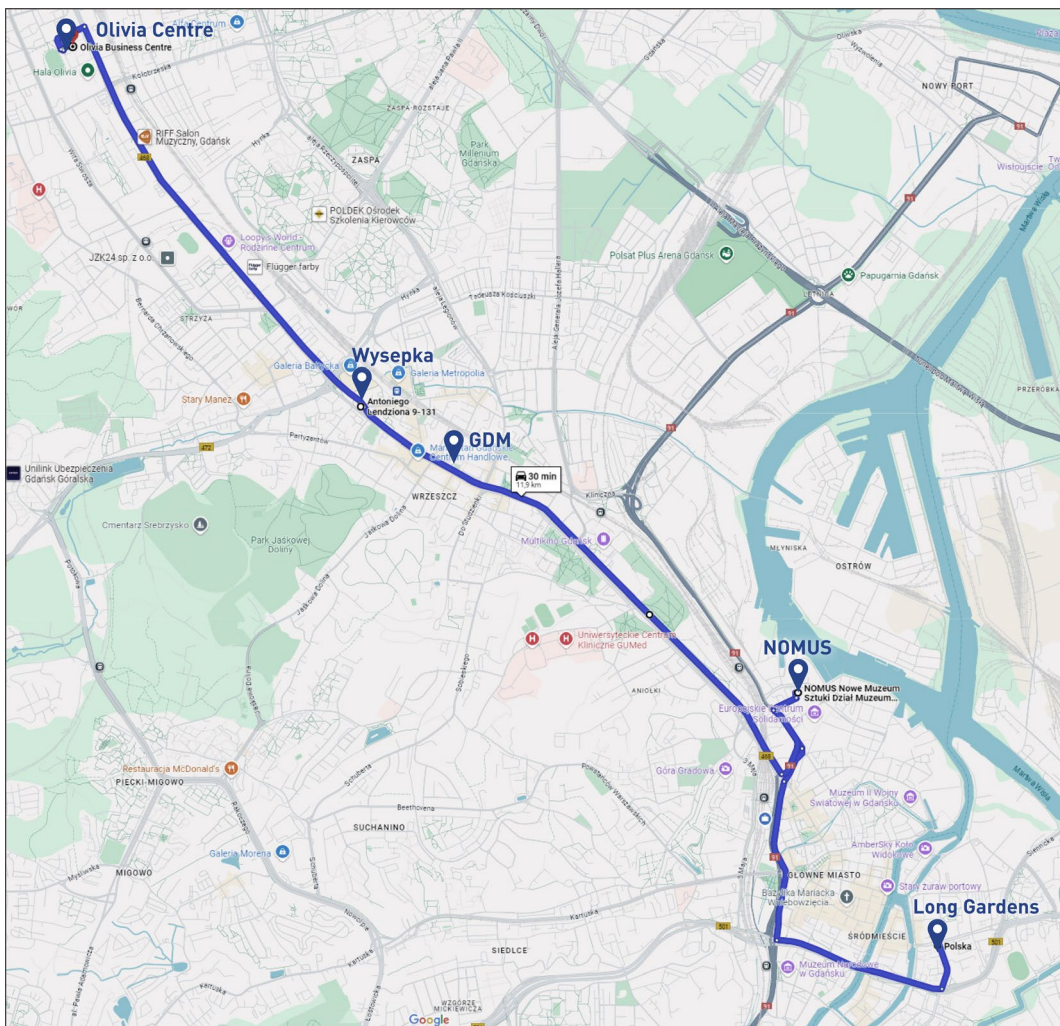


ace-cae.eu





The Long Market (Długi Targ) with the Town Hall. The Main Venue in the corner ↑



Bus route on Thursday, from Długie Ogrody (Long Gardens) to Olivia Centre.



Funded by  
the European Union





## If you are staying longer in Gdańsk...



It is highly recommended that you find some time to stroll around and explore the city on your own in daylight. An extended visit to all the neighborhoods covered in our collective walks will help you understand better the very essence of Gdańsk's complex history and the beauty of its cityscape, often hidden to an untrained eye. We encourage you to go a bit off beaten track, if the weather permits, stroll the beach, climb some scenic viewpoints, be them hilltops or belltowers.



There several museums and exhibitions worth a visit, not only as an option for a rainy day. The [European Solidarity Center](#) and [The World War II Museum](#) rank highest among those recommended by foreign visitors. The third would be the the most iconic building in Gdańsk – the gothic crane that has only recently been restored and reopened to the public – or the fortified mountain overlooking the historic centre where the [Hevelianum](#) science center is located. Not to mention, most probably the best panoramic lookout onto the old city centre. The whole complex has been undergoing painstaking restoration work for recent decades. At the other end of the old city centre lies the Bishop's Hill (Biskupia Górka). The pseudo-Teutonic



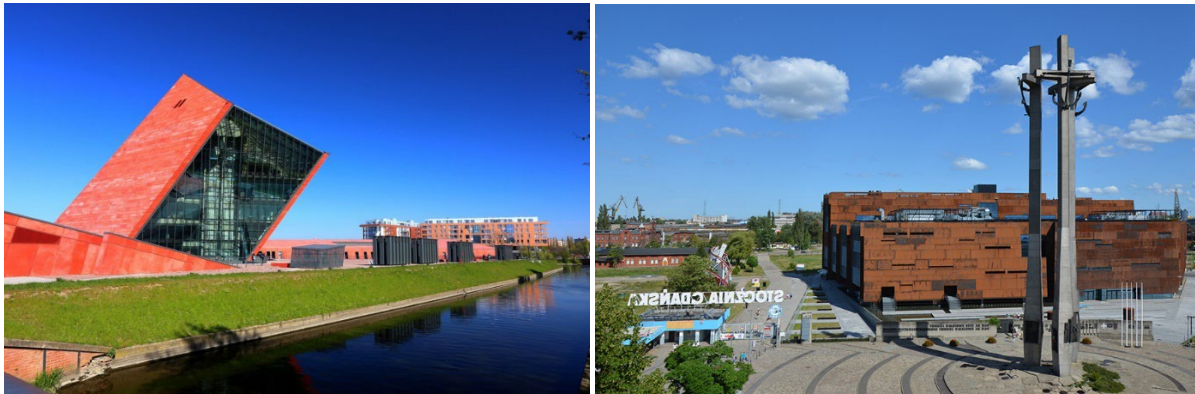
Funded by  
the European Union



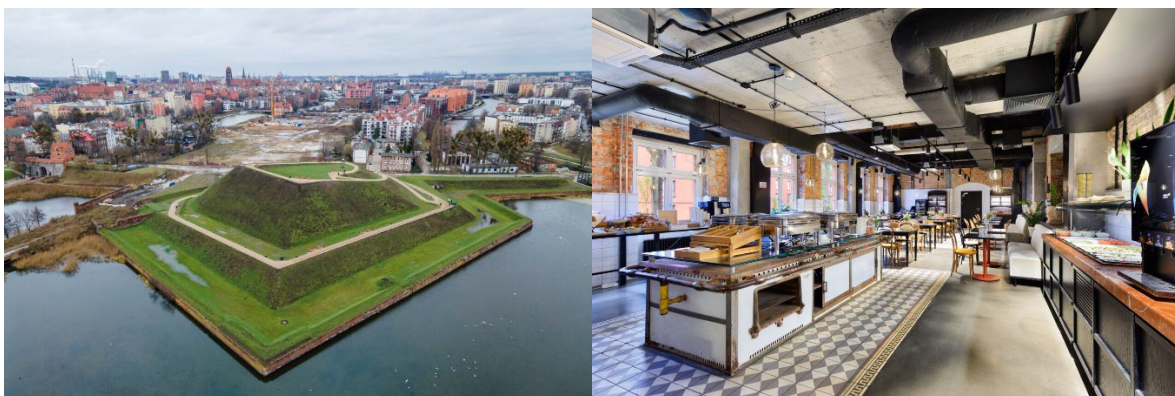
āce-cāe.eu



castle erected by the Nazis on the top is not accessible to the public but one can take a look at the revitalization works still underway in the neighborhood below. If the autumn weather is not too annoying, take the opportunity to spend some more time at the former shipyard grounds. There are several accessible courtyards and assembly halls in the imperial shipyard that are worth a sneak-in, along with the recently renovated [HQ-building](#). Most of them come alive with music, art and gastro events only in summer but if you are lucky enough you might find the [art-coop WL4](#) open and be able to at least have a look inside.



Other interesting neighborhoods where similar processes are underway to restore their former splendor, but which already require a ride further afield are Dolny Wrzeszcz, Nowy Port and Orunia. The latter can be reached by strolling along the medieval Radunia canal starting in the historic center. Those who prefer to stay inside the city walls are encouraged to get more familiar with Dolne Miasto – a long forgotten gem of the historic centre, cut off by the highway-wannabe Podwale Przedmiejskie (one of our topics on Day 1). A stroll along the recently partially renovated bastions or a visit to the [Łaźnia contemporary art centre](#) (a former bathhouse) together with a few remaining permanent objects of the [External Gallery](#) is suggested, followed by a warm-up at Stara Kuchnia – an old kitchen of the former hospital that retained much of the original equipment. Ask the staff to show you the interiors of the oldest part of the complex with recently uncovered frescoes.



In addition to the exhibitions in the House of Tortures envisaged in our program, the [Gdansk Museum](#) also manages several other interesting buildings. Their interiors are worth a look. These include the [Artus Court](#), the [Red Chamber in the gothic City Hall](#) and the Rococo-styled rooms of the [Uphagen House](#). The Museum's newest branch is the gothic Great Mill, which houses probably the world's largest collection and a fascinating educational [exhibition on amber](#). The [National Museum](#), located in a former monastery in turn, is home to a huge collection of medieval, renaissance and baroque domestic and Dutch art, including the triptych of the [Last Judgement by Hans Memling](#).

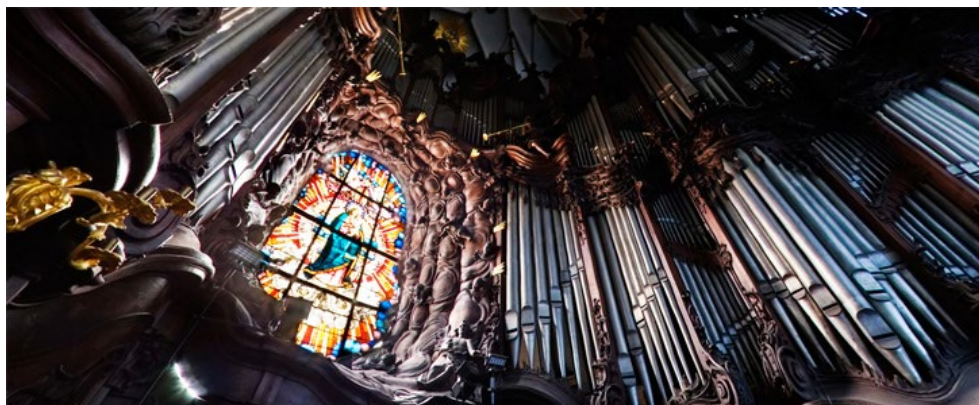




We also recommend you a walk through the not-so-obvious sights of the communist-era large-panel housing estates. In Przymorze (literally and quite accurately “Close-to-the-sea”, making a short walk to the beach an easy next step) you will find the longest building in Poland – one of the so-called wave-blocks measuring 860 m in length. In adjacent Zaspá district, one can admire nearly [80 large-format murals](#) decorating mainly the blind side walls of blocks of flats. A similar outdoor gallery of murals can be found on the pillars of the Kliniczna junction viaducts near Politechnika train station.



Obviously, even if you don't move from the center, there is plenty to see and discover. Most gloomy brick Gothic churches house bright interiors with beautiful artwork. Some of them, including [St. John's](#) – now serving mainly as a concert hall, were only recently brought back to their former glory. The organ music is also worth listening to if you are lucky enough to come across a performance. Just for the sight of the instrument in the [Cathedral of Oliwa](#), a trip to this distant district is worth the time. A walk in the nearby [18-century park](#) in its autumnal splendor and a visit to one of Oliwa's street cafés can contribute to the full experience.







Oliwa district with Olivia Centre – the venue of the workshops on Thursday afternoon – in the background. To the left of it (and below) – the city stadium (designed by RKW Architektur).

